

# 1<sup>st</sup> GRADE Math Warm Ups

**I.OA.7-8**

2

$8 + 2 = 4 + 6$

True

10 = 10

1

## True or False?

**$8 + 2 = 4 + 6$**

Use numbers, pictures, and/or words to show your thinking.

10AD7



**SLIDES • TASK CARDS • JOURNAL PROMPTS**

# INTERACTIVE WHITEBOARD SLIDES

Jax said  $11 = 13 - 4$  is not true.  
How could Jax fix this  
problem to make it true?

Use numbers, pictures, and/or words  
to show your thinking.



$$11 = 13 - 4$$



$$11 = 9$$

take  
less  
away

Writer's Bliss 2018



# TASK CARDS



Brent's Math Solutions

1

$$\begin{array}{r} 8+2 = 4+6 \\ \vee \qquad \vee \\ \text{ooooo} \quad \text{ooooo} \\ \text{ooo|oo} \quad \text{oooo|o} \\ 10 = 10 \end{array}$$

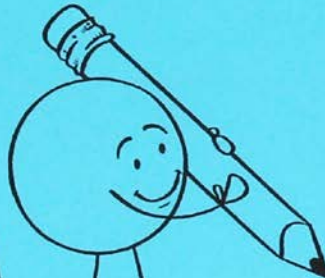
True

2

1

**True or False?**  
 **$8 + 2 = 4 + 6$**

Use numbers, pictures, and/or words  
to show your thinking.



LOAD7

10

CCSS labeled





# JOURNAL PROMPTS



**Tam said  $1+4=5+3$ . Sam says she is wrong. Who is correct?**

Use numbers, pictures,  
and/or words to show your thinking.



$$\begin{array}{r} 1+4=5+3 \\ \checkmark \\ 0|0000 \\ 5 \end{array} \neq \begin{array}{r} \checkmark \\ 0000001 \\ 000 \\ 8 \end{array}$$

Sam is correct because  $5 \neq 8$